

**UCL WOMEN'S
HOCKEY CLUB**



SPONSORSHIP PROPOSAL

2023-2024

Visit Our Website

<https://uclwomenshockeyclub.weebly.com/>

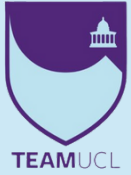


Who are we?



We are a vibrant university women's hockey club with nearly 150 members of all skill levels, including international and beginners. With four competitive teams and strong connections to the UCL Men's Hockey Club and the London Academicals Hockey Club, our weekly schedule is packed with training, matches, and social events. Our goal is to inspire students of all abilities, promoting their well-being and fostering a tight-knit, supportive community.





Our Goal

"To provide inclusive playing and developmental opportunities for individuals of all skill levels, while fostering a vibrant social community that encourages active participation."



How we will achieve it

Fostering Growth and Engagement. To support high-level players, we offer fitness sessions, professional coaching, and opportunities to join our esteemed alumni team. Beginners receive consistent match time and learn from experienced club members, while our active social calendar, including well-attended annual events like the Christmas Ball and Summer Tour, generates widespread interest, fostering a vibrant and inclusive community.

Why sponsor the UCLWHC?



**Community
Engagement**



Brand Visibility



**Networking
Opportunities**



OUR COMMITMENT TO COMMUNITY ENGAGEMENT

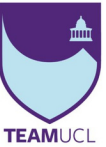
As a club, we strive to make a positive impact on the community around us, and have taken many steps to actualise this ambition.

Some highlights of our efforts from last year include:

- Fundraising for CoppaFeel
- Camden Canal Clean Up
- ThisGirlCan Events
- StudentMinds
- Charity Pub Quiz
- Fundraising for Solace
- Women's Aid
- Fundraising for SolidariTee
- Sustainability Pledges
- Actively Empowering Women in Sport and Society



Community
Engagement





Brand Visibility & Networking Opportunities



What can we offer you?

Promotion across campus



Kit & Media promotion



Events & Matches





Brand Visibility

Promotion across campus

- We want to provide our members with as many opportunities as possible, inspiring them to succeed on and off the pitch.
- As part of our proposal, we would love to promote your company to both members of the Women's Hockey Club, and the UCL study body as a whole.
- By hosting Women in Finance events, campaigns and initiatives, you would be provided with an excellent opportunity to inspire new talent.



Kit & Media Promotion



KIT PROMOTIONS

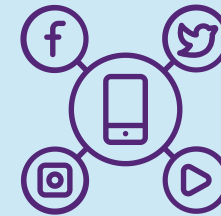
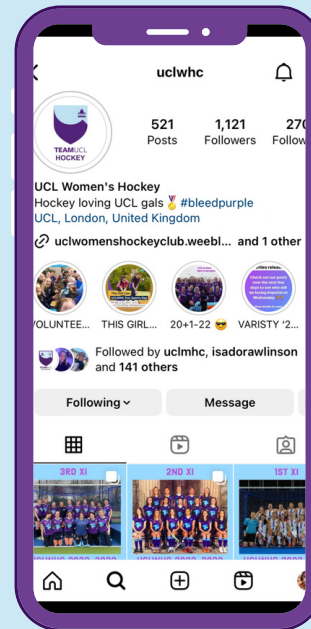
We would be able to promote your branding on our kit: including match kit, training tops, jackets, skorts and jumpers. With matches and events occurring six days of the week, and many members wearing their kit in their leisure time, your branding would be seen by hundreds, every day, across the country.



Brand Visibility

MEDIA PROMOTIONS

The Club's social media presence is ever growing, with close to a thousand followers on Instagram, and a strong international alumni network on Facebook closely following our events and achievements. We would be able to promote your brand on this ever-growing, thriving network.





Promotion at events & matches



The Club hosts a multitude of events and matches across the academic year, with highlights including:

- Varsity Match against KCL.
 - Hosted at the Olympic Park.
 - 400 tickets usually sold each year in an event which attracts alumni from across the globe.
- 4 teams competing several times weekly in BUCS and LUSL leagues.
 - Members travelling all across the South of England and Wales.
- A variety of charity and community outreach events including joint events with alumni and other UCL societies.
- Welcome Week and "Give it a Go" events, allowing all of UCL's 40,000 strong student body to engage with the club.
- Weekly Social events, as well as the annual Christmas Ball, and Summer Tour.

How will your sponsorship help us?



Entering into a partnership would allow the Club to continue and expand its work in making hockey accessible and engaging the local community.

With your partnership we could:

- Inspire our talented members to pursue exciting career opportunities with your firm
- Host events celebrating the club and its achievements, thus building a diverse, connected and supportive network
- Host Charity events engaging and supporting the local community, ensuring maximum impact is achieved
- Help improve the financial accessibility of hockey by allowing us to subsidise costs for members
- Rent the necessary facilities to ensure all members can regularly train and play for an accessible price





Sponsorship Options

We offer packages at different price points and are happy to discuss adjustments and benefits specific to your brand.

Choose the best fit for your company.

Bronze £500	Silver £1000	Gold £2000
<p>Promotion across campus</p> <p>Brand promotion at varsity</p> <p>Limited access to our social media channels</p> <p>Welcome Fair access</p> <p>Logo on arm of kit</p>	<p>All bronze benefits +</p> <p>Full access to our social media including a sponsorship page on our website (x)</p> <p>Secondary branding on kit</p>	<p>All silver benefits +</p> <p>main branding on playing and training kit</p> <p>Event Opportunities</p> <p>Promotion and Charity and Fundraising events</p>

Contact Us

+447496845501 (Maud Bridel, Treasurer)

maud.bridel.20@ucl.ac.uk

<https://uclwomenshockeyclub.weebly.com/>



TEAMUCL



UCL Student Union,
25 Gordon Street,
London, WC1H 0AY.

